

101

C O P E N H A G E N

CERAMIC & ACCESSORIES COLLECTION





ABOUT 101 COPENHAGEN

101 Copenhagen is a Danish design brand founded in 2017 with a strong vision to create a world of beautiful lighting and accessories of exquisite craftsmanship, quality and timeless design for Scandinavian living. With a passion for materials and refined textures combined with our design aesthetic and an organic, calm color scheme, we are proud to present a collection filled with must-have novelties and timeless classics.

OUR CREATIVE DRIVE

The 101 Copenhagen carefully curates and design objects for Scandinavian living. The creative drive is centered in a fusion of the Scandinavian design tradition influenced by the timeless Japanese approach to material and techniques.

The objects designed reflects the symbioses of design traditions whilst also featuring unique embedded stories, symbols and associations expressed in a minimalist idiom. The design approach is notably holistic, the work process is dynamic and characterized by freedom of expression, which creates unique and timeless pieces.

101 COPENHAGEN 2020 ©

Photographer
Graphic design & Styling
Print house

Jacob Skaaning
Malene Lüth
Rosendahls



Kristian Sofus Hansen

Kristian is a Danish designer graduated from the Royal Danish Academy of Fine Art whilst also spending time in Japan studying at the Kyoto Institute of Technology.

Kristian started collaborating with Tommy Hyldahl in 2016 for 101 Copenhagen and has now ventured out in the world of lighting solutions and home accessories for the compagny.



Nicolaj Nøddesbo

Nicolaj is a Danish designer from the Aarhus School of Architecture. Nicolaj joined the design team in 2017 and has since developed truly iconic pieces including innovative light solutions and timeless novelties in the accessories department.

Nicolaj strives to create functional design with personality and character, focusing on materiality and tactility creating minimalistic and sculptural designs.



Tommy Hyldahl

Tommy is the founder and partner in 101 Copenhagen and has been involved in the creative direction of the company since its start.

Tommy launched 101 Copenhagen in 2017 a company that focuses on designing and curating home accessories and lighting solutions for Scandinavian living.



COBRA MINI

Cobra mini is the newest addition to the Cobra collection in our signature hand glazed ceramic. Cobra celebrates the absurd and playful silhouettes of the Cobra Arts Movement of the 1960s. The Cobra collection challenges the balance between soft and consistent shapes, playing with human silhouettes in contrast to architectural building components. The design is based on a few naive hand sketches, from where the human like silhouettes occurred, together forming a family of tree vases. Hand glazed natural product therefore the colors may variate. Not waterproof safe. Designed by Kristian Sofus Hansen & Tommy Hyldahl



COBRA UNO MINI
BLACK
No. 203024



COBRA DOUBLE MINI
BLACK
No. 203025



COBRA TALL MINI
BLACK
No. 203023

COBRA MINI

Cobra mini is the newest addition to the Cobra collection in our signature hand glazed ceramic. Cobra celebrates the absurd and playful silhouettes of the Cobra Arts Movement of the 1960s. The Cobra collection challenges the balance between soft and consistent shapes, playing with human silhouettes in contrast to architectural building components. The design is based on a few naive hand sketches, from where the human like silhouettes occurred, together forming a family of tree vases. For the Cobra collection a new bubble surface texture was developed, adding a tactile and refined expression to the vase. Hand glazed natural product therefore the colors may variate. Not waterproof safe. Designed by Kristian Sofus Hansen & Tommy Hyldahl



COBRA UNO MINI
BUBBLE WHITE
No. 203021



COBRA DOUBLE MINI
BUBBLE WHITE
No. 203022



COBRA TALL MINI
BUBBLE WHITE
No. 203020





COBRA

Cobra celebrates the absurd and playful silhouettes of the Cobra Arts Movement of the 1960s. The Cobra collection challenges the balance between soft and consistent shapes, playing with human silhouettes in contrast to architectural building components. The design is based on a few naive hand sketches, from where the human like silhouettes occurred, together forming a family of four vases. For the Cobra collection a new bubble surface texture was developed, adding a tactile and refined expression to the vase. Hand glazed natural product therefore the colors and texture may vary. Not waterproof safe. Designed by Kristian Sofus Hansen & Tommy Hyldahl



COBRA DOUBLE
BUBBLE WHITE
No. 201013



COBRA TALL
BUBBLE WHITE
No. 201010



COBRA FAT
BUBBLE WHITE
No. 201011



COBRA UNO
BUBBLE WHITE
No. 201012

ORIGAMI

Origami Vases is inspired by the traditional Japanese art of paper folding. The vases imitate two pieces of paper folded towards each other, adding a refined contrast between sharp and soft surfaces. By challenging the material, itself, Origami went through several attempts, before achieving the low falling round shape and thin opening. Origami is made in hand glazed ceramic therefore the colors may variate. Not waterproof safe. Designed by Kristian Sofus Hansen & Tommy Hyldahl



ORIGAMI VASE BIG
COFFEE
No. 201003

ORIGAMI VASE MINI
DARK GREY
No. 201004



KYOTO

Kyoto is inspired by sculptural shapes of ancient Japanese and Chinese vases. The vase is designed as a cross of four massive walls, lifting an oval shaped sphere. The vase has a circular opening in the middle, characterized by the unfinished meeting between the four walls. Kyoto is made from fiber concrete and comes in two sizes. Hand glazed natural product therefore the colors may variate. Not waterproof safe. Designed by Kristian Sofus Hansen & Tommy Hyldahl



KYOTO VASE BIG
COFFEE
No. 201001

KYOTO VASE MINI
COFFEE
No. 201002

OKA

Oka tray is inspired by traditional Japanese serving trays, often produced in wood or bamboo material. Oka tray challenges the perception and function of the traditional tray, by adding a new material to a well-known form. The tray is cast in solid fiber concrete, adding a certain heaviness to the brutalistic object, while also creating a unique and refined surface texture. With its sculptural and architectural shape, it can be used for various decoration purposes or stand alone to create an art piece.

Hand glazed natural product therefore the colors may variate. Not waterproof safe.

Designed by Kristian Sofus Hansen & Tommy Hyldahl.



OKA TRAY
COFFEE
No. 201022



DUCK

The Duck series is exuberant in its expression challenging the simplicity of nature with its rawness into a simple, yet interesting design object. The Duck series consists of trays, vases, bowls and pots in different shapes, sizes and colours giving each item of the series a unique look. This is a hand glazed and natural product therefore the colours may variate. Not waterproof safe. Designed by Nicolaj Nøddesbo & Tommy Hyldahl



DUCK TRAY BIG
COFFEE
No. 011282



DUCK TRAY SMALL
COFFEE
No. 011283



DUCK VASE SLIM
COFFEE
No. 011280



DUCK VASE FAT
DARK GREY
No. 011281

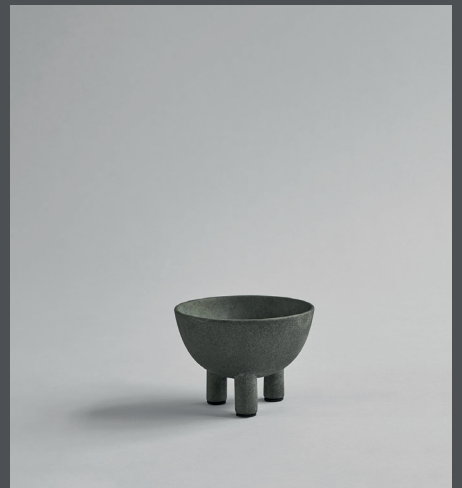
DUCK



DUCK POT
COFFEE
No. 011286



DUCK BOWL MINI
SAND
No. 203003



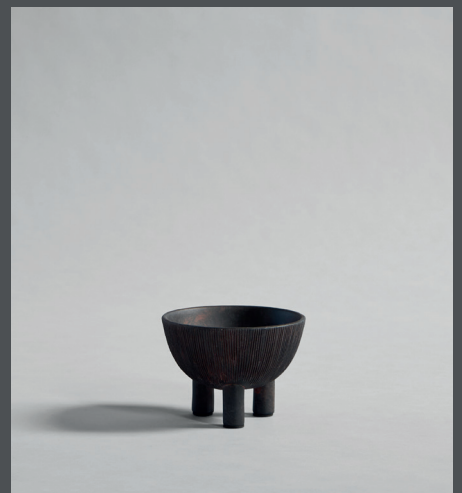
DUCK BOWL MINI
DARK GREY
No. 203002



DUCK BOWL MINI
RIFLED
No. 111212



DUCK BOWL MINI
LIGHT GREY
No. 011285



DUCK BOWL MINI
COFFEE
No. 111203

DUCK



DUCK BOWL BIG
RIFLED
No. 111218



DUCK BOWL BIG
DARK GREY
No. 011284



DUCK BOWL BIG
LIGHT GREY
No. 203001



DUCK BOWL BIG
SAND
No. 111036



DUCK BOWL BIG
COFFEE
No. 111044



DUCK POT
SAND
No. 111038



GUGGENHEIM

Guggenheim is a collection of sculptural ceramic vases based on archetypal geometry. The transition between merged geometry, sharp lines and thin silhouettes creates decorative optical illusions. The texture of the handmade surface beautifully catches the light and becomes an artistic object in the space. The Guggenheim series is hand glazed ceramic therefore the colors may variate. Not waterproof safe. Designed by Kristian Sofus Hansen & Tommy Hyldahl



GUGGENHEIM BIG
DARK GREY
No. 111125



GUGGENHEIM BIG
BLACK
No. 203004



GUGGENHEIM MINI
DARK GREY
No. 203005



GUGGENHEIM MINI
BLACK
No. 111126

GUGGENHEIM



GUGGENHEIM BIG
COFFEE
No. 111219



GUGGENHEIM MINI
COFFEE
No. 111220



GUGGENHEIM SQUARE
COFFEE
No. 111124

BLOCK

The block collection is a unique and unusual series of handmade ceramic vases that not only can be used as a vase but also a bowl. The Block vase come in three sizes each in a different color. Style it with your favorite pieces of decoration to give it a personal look or stand alone to create a commanding focal point in the heart of your interior. Hand glazed natural product therefore the colors may vary. Not waterproof safe. Designed by Nicolaj Nøddesbo & Tommy Hyldahl



BLOCK BIG
DARK GREY
No. 111060

BLOCK MINI
BLACK
No. 111062

BLOCK MIDI
COFFEE
No. 110061

OSAKA

Osaka is inspired by ceramic storage objects from Asia. The simplified half sphere shape is lifted from the ground by three massive walls, adding a sculptural detail to the design. With its sculptural and architectural shape, the Osaka bowl brings character into any interior scheme. The bowl is cast in solid fiber concrete, adding a certain heaviness to the brutalistic object, while also creating a unique and refined surface texture. Use the bowl for various decoration purposes or stand alone to create an art piece. Hand glazed natural product therefore the colors may variate. Not waterproof safe. Designed by Nicolaj Nøddesbo & Tommy Hyldahl

OSAKA BOWL BIG
COFFEE
No. 111209



OSAKA BOWL MINI
DARK GREY
No. 111210



OSAKA BOWL MINI
LIGHT GREY
No. 111211



SPHERE

The Sphere collection celebrates unique silhouettes and textures that makes an impact with the decorative charm of sculptural art. Elegantly sculpted, each vase is finished in intricate ornate detailing. Inspired by ancient Chinese vases, a palette of faded earth tones became the series characteristic appearance. Sphere is also the first ceramic design we developed and quickly it became our signature. The vases are developed in close collaboration with highly skilled ceramist, ensuring the precise contrast between the smooth shapes and sharp edges. This season we added a new bubble surface texture to the collection, adding a tactile and refined expression to the series. Hand glazed natural product therefore the colors may variate. Not waterproof safe. Designed by Kristian Sofus Hansen & Tommy Hyldahl



SPHERE



SPHERE VASE SQUARE HEXA
BLACK
No. 203013



SPHERE VASE SQUARE HEXA
SAND
No. 203014



SPHERE VASE SQUARE BIG
BUBBLE WHITE
No. 011221



SPHERE VASE SQUARE BIG
COFFEE
No. 111183



SPHERE VASE SQUARE BIG
SAND
No. 111028



SPHERE VASE SQUARE BIG
DARK GREY
No. 011221



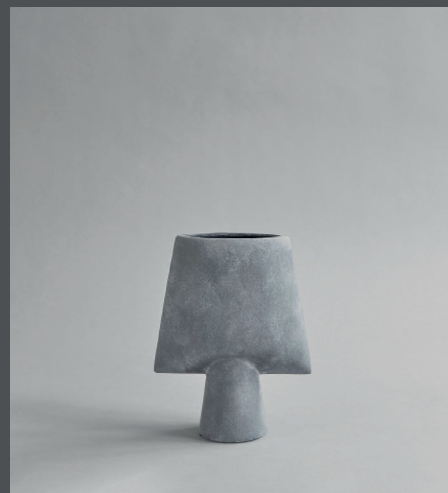
SPHERE



SPHERE VASE SQUARE MINI
DARK GREY
No. 111020



SPHERE VASE SQUARE MINI
SAND
No. 111204



SPHERE VASE SQUARE MINI
LIGHT GREY
No. 011215



SPHERE VASE SQUARE MINI
COFFEE
No. 111021



SPHERE VASE SQUARE MINI
OCHER
No. 111181



SPHERE VASE SQUARE MINI
TERACOTTA
No. 111182



SPHERE VASE SQUARE MINI
RIFLED
No. 111216



SPHERE VASE SQUARE MINI
TAUPE
No. 203011



SPHERE VASE SQUARE MINI
BUBBLE WHITE
No. 202002



SPHERE



SPHERE VASE BUBL MEDIO
COFFEE
No. 111193



SPHERE VASE BUBL MEDIO
DARK GREY
No. 011220



SPHERE VASE BUBL MEDIO
LIGHT GREY
No. 203006



SPHERE VASE BUBL MEDIO
BUBBLE WHITE
No. 202004



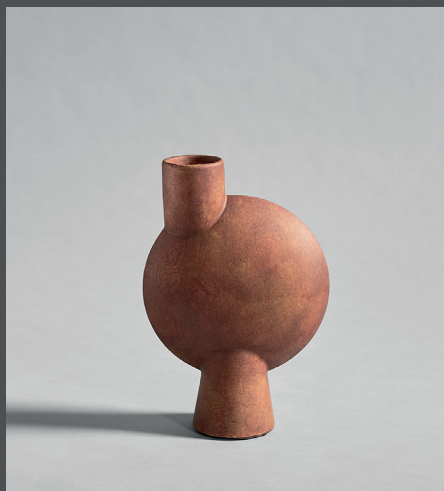
SPHERE VASE BUBL MEDIO
SAND
No. 111174



SPHERE VASE BUBL MEDIO
TAUPE
No. 111074



SPHERE VASE BUBL MEDIO
OCHER
No. 203007



SPHERE VASE BUBL MEDIO
TERACOTTA
No. 111173



SPHERE



SPHERE VASE BUBL BIG
DARK GREY
No. 201015



SPHERE VASE BUBL BIG
SAND
No. 201014



SPHERE VASE BUBL HEXA
SAND
No. 201016



SPHERE VASE BUBL HEXA
DARK GREY
No. 201017



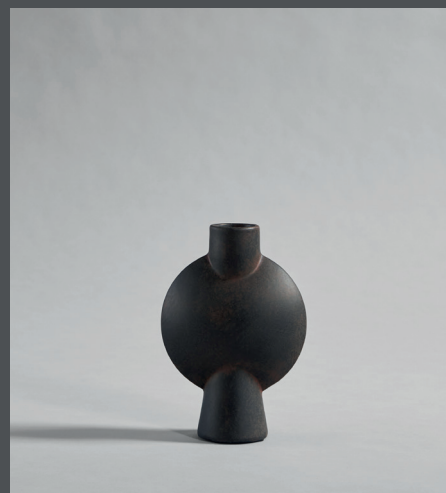
SPHERE



SPHERE VASE BUBL MINI
TAUPE
No. 111176



SPHERE VASE BUBL MINI
DARK GREY
No. 111029



SPHERE VASE BUBL MINI
COFFEE
No. 111030



SPHERE VASE BUBL MINI
BUBBLE WHITE
No. 202003



SPHERE VASE BUBL MINI
LIGHT GREY
No. 203009



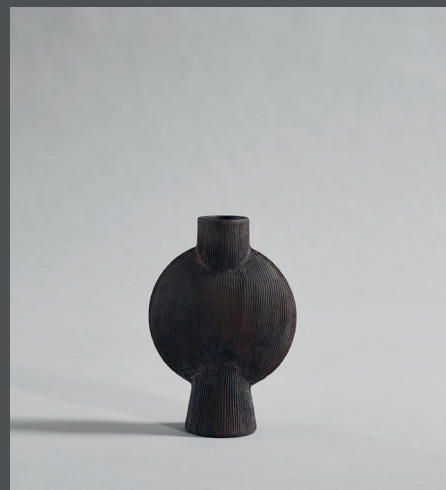
SPHERE VASE BUBL MINI
SAND
No. 203008



SPHERE VASE BUBL MINI
OCHER
No. 111180



SPHERE VASE BUBL MINI
TERRACOTTA
No. 203010



SPHERE VASE BUBL MINI
RIFLED
No. 111217

SPHERE



SPHERE VASE TALL
DARK GREY
No. 011219



SPHERE VASE TALL
COFFEE
No. 111205



SPHERE VASE FAT
COFFEE
No. 203012

SPHERE VASE ORIGINAL
TAUPE
No. 111172

SPHERE VASE FAT
DARK GREY
No. 011218

ARKET

Arket is a sculptural vase influenced by sharp architectural lines and curves from the mid-20th century. The tall vase is characterized by 5 vertical lines creating a sculptural play between light and shadow, sharp and soft surfaces. Arket is made from ceramic and comes in a characteristic grey color. Hand glazed natural product therefore the color may variate. Not waterproof safe.

Designed by Nicolaj Nøddesbo & Tommy Hyldahl



ARKET VASE
DARK GREY
No. 111187

KABIN

Kabin is a collection of handmade ceramic vases that is inspired from Japanese craftsmanship. The design is characterized by an oval shape, resting on top of a small foot or pedestal, adding a certain refinement to the classic form. The series of large table vases was created to offer the same stability and complexity as the classical Japanese tea bowls without changing the simplicity iconic to Japanese design. Combining inspiration from the classical Japanese simple shapes whilst intertwining them with a minimalistic Scandinavian approach giving them new life the Kabin series emerged. Kabin is a series of handmade ceramic vases in four sizes. Hand glazed natural product therefore the colors may vary. Not waterproof safe. Designed by Nicolaj Nøddesbo & Tommy Hyldahl



KABIN VASE TALL
DARK GREY
No. 111041



KABIN VASE TALL
SAND
No. 193015



KABIN VASE FAT
SAND
No. 111043



KABIN VASE SMALL
BLACK
No. 111039



LUNA

Luna is a horizontal ceramic vase for exhibiting flowers and objects. Luna is inspired by a horn, and the shape of the half moon. Luna comes in a characteristic grey color and a hand glazed natural product therefore the colors may variate. Not waterproof safe. Designed by Nicolaj Nøddesbo & Tommy Hyldahl



LUNA VASE BIG
DARK GREY
No. 111185

MADAME

Madame Vases is designed as a simplified vase, based on the shape of a cylinder and sphere. The shape of the vase lifts up the flowers and creates an attraction in the space. Madame is made from ceramic and comes in two sizes. Hand glazed natural product therefore the colors may variate. Not waterproof safe. Designed by Nicolaj Nøddesbo & Tommy Hyldahl



MADAME BIG
GREY
No. 111127



MADAME MINI
GREY
No. 111128

SUBMARINE

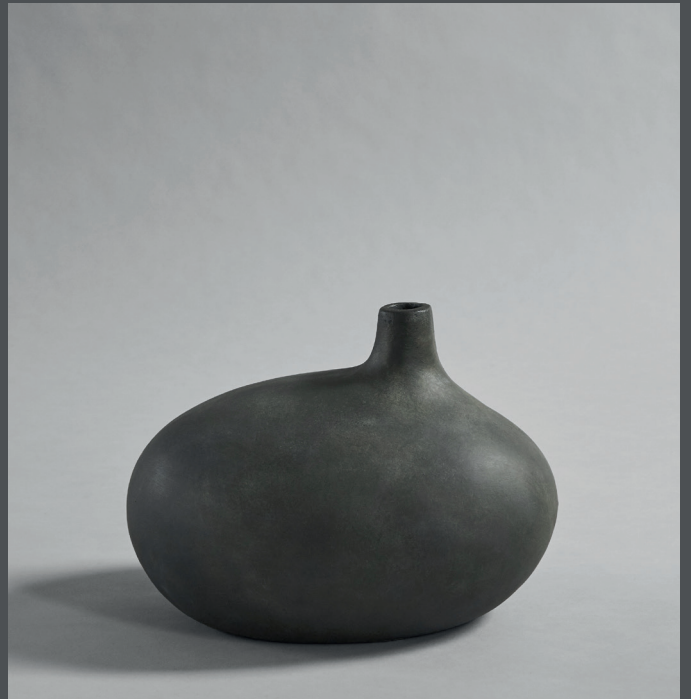
The Submarine collection are generously proportioned ceramic vases that offers contemporary decorative design in this sleek and eccentric take on the modern vase. Each vase becomes a majestic statement in the interior surrounding, creating a unique and modern expression for your home. The Submarine collection radiates its own personality with the three different sizes and shapes. The vases are hand glazed therefore the colors may variate. Not waterproof safe.

Designed by Nicolaj Nøddesbo & Tommy Hyldahl

SUBMARINE VASE FAT
DARK GREY
No. 011289



SUBMARINE VASE BIG
LIGHT GREY
No. 011287



SUBMARINE VASE SMALL
DARK GREY
No. 011288





OFFSET

Offset is designed as a distortion of a historical vase shape, offset challenges the idea and concept of a vase. The vase drastically changes appearance, when viewed from specific angles. From one side it imitates the picture of a traditional vase, and from the other it becomes a sculptural object. Offset is made from fiber concrete and comes in two sizes. Hand glazed natural product therefore the colors may variate. Not waterproof safe. Designed by Nicolaj Nøddesbo & Tommy Hyldahl



OFFSET VASE MINI
DARK GREY
No. 111214



OFFSET VASE BIG
DARK GREY
No. 111213

TATE

Tate is a timeless vase that reflects simplicity and functionality. The refined metal frame is elegantly shaped to carry the glass vase, while adding a sculptural detail throughout the design. Tate can stand alone as a sculpture in your interior, or serve as a vase for fresh flowers and appreciated objects. Designed by Kristian Sofus Hansen & Tommy Hyldahl



TATE VASE BIG
BRASS
No. 111114



TATE VASE MINI
BRASS
No. 111115



TATE VASE BIG
BURNED BLACK
No. 111188



TATE VASE MINI
BLACK BURNED
No. 111189

REFLECT

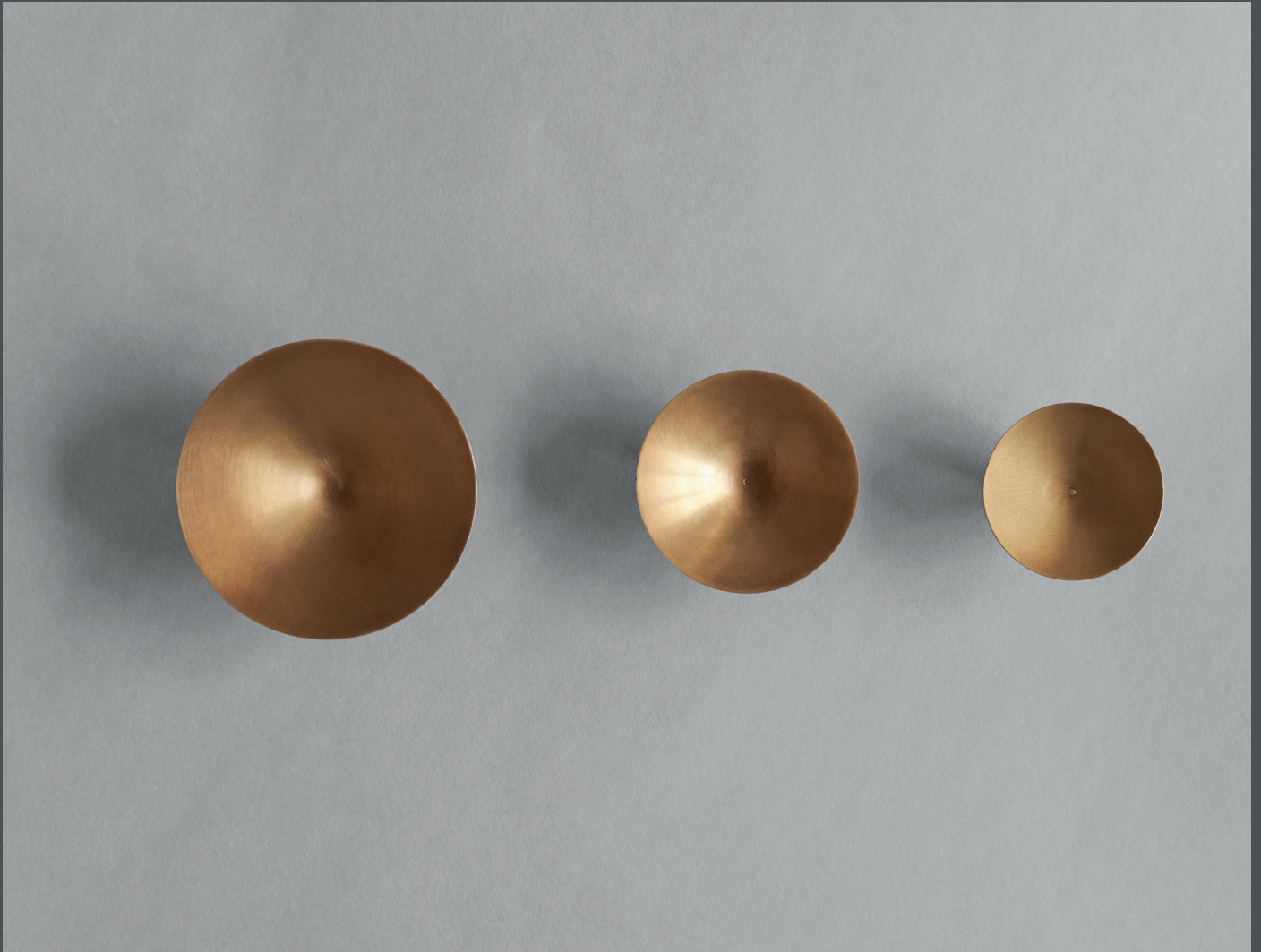
The Reflect Mirror series is an elegant and simple range of mirrors that represent a fine addition for both classic and contemporary interior spaces. The simple and straight lines render an understated yet modern influence, while the brass frame brings a touch of classic beauty to the design. Elegant proportions and simplicity of design is key for a stunning reflection solution. The Reflect mirrors comes in three versions and in antique brass or burned black. Designed by 101 Copenhagen Design House



REFLECT MIRROR SMALL
BRASS
No. 011161

HIHAT

Inspired by musical instruments the Hi-Hat knobs are playfully inspired by the cymbal and adds a frisky touch to your home. The spun solid brass gives the knobs a beautiful patina over time and becomes more beautiful with use. All knobs are sold in set of two. Designed by Kristian Sofus Hansen & Tommy Hyl Dahl



HIHAT KNOBS, 2 SET MINI
BRASS
No. 011301



HIHAT KNOBS, 2 SET MIDI
BRASS
No. 011302



HIHAT KNOBS, 2 SET MAXI
BRASS
No. 011303



GET IN CONTACT WITH US

Global sales inquiries:

sales@101cph.com

General inquiries:

info@101cph.com

Support inquiries:

support@101cph.com

PRESS KITT // IMAGEBANK

Press inquiries:

press@101cph.com

For Press kitt & Imagebank please go to:

www.101cph.com